

PRIMO™ twin-probe system



Low-risk investment
for fast payback



Exceptional
ease of use



Outstanding
performance for increased
yield and shorter cycle times

WARRANTY

Primo Premium Support Cover

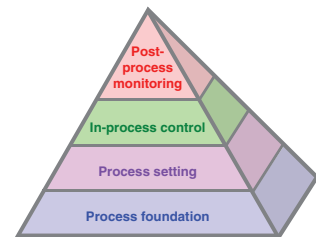
includes protection against accidental damage during use

PRIMO™ system – innovative process control

Introduce automated workpiece setting and tool setting to your machine shop and reap the benefits

The higher the degree of human involvement in the manufacturing process, the higher the risk of error.

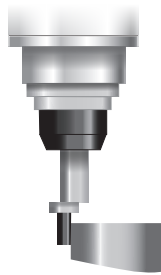
When setting workpieces and cutting tools on your machine tool using manual processes, you run the risks associated with some common problems:



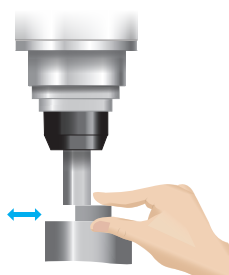
Productive Process Pyramid™



Dial test indicator



Edge finder



Slip gauge on table



Off-line presetter

- Non-productive time – most machine tool users take more than ten minutes to set each part and more than five minutes to set each tool
- Operator error and subsequent variation
- Errors due to manual calculation and transfer of data

All of which lead to reduced profits.

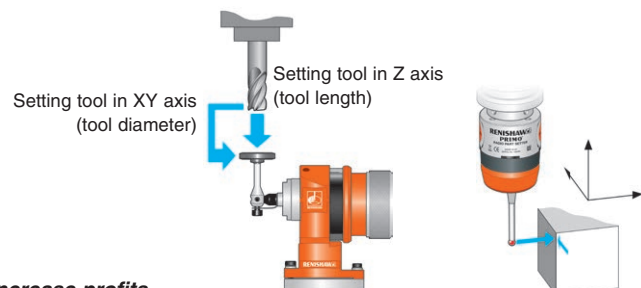
The Renishaw Primo twin-probe system can facilitate the following measures for enhanced management of your process setting, leading to an **increase in your profits**.

Process setting

Automated measurement of component position and automated on-machine tool setting eliminate manual setting operations and:

- Improve setting accuracy
- Enable fast, consistent setting times – up to 90% time saved when compared to manual methods
- Eliminate manual setting errors and data entry
- Reduce non-productive time and scrap

All of which increase productivity, improve quality and increase profits.



For further details regarding the benefits of all levels of process control within the Productive Process Pyramid, please refer to *Metrology solutions for productive process control* (Renishaw part no. H-3000-3038) or visit www.renishaw.com/processcontrol

PRIMO system – new and revolutionary

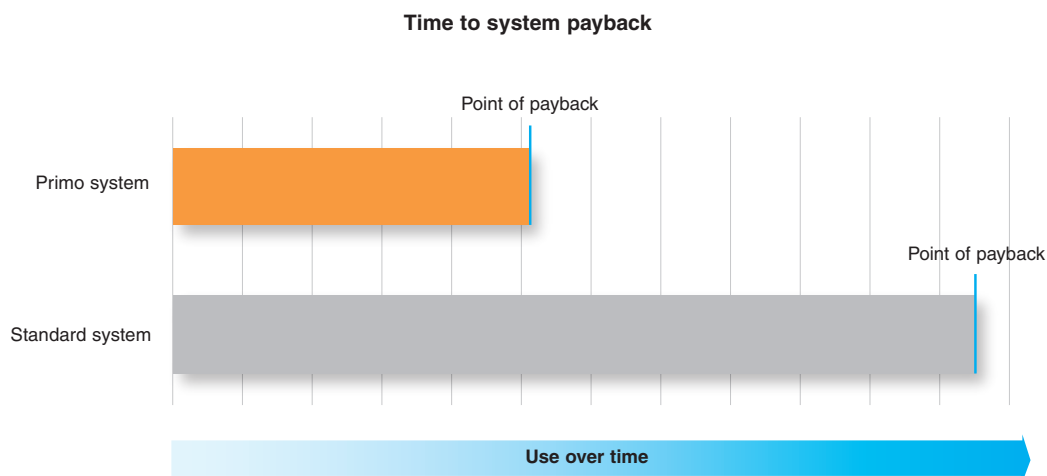
With the Primo system's lower initial investment you can quickly realise the benefits of automated part and tool setting

Here's how:

- Lower initial investment in hardware
- Top-up cost that you only pay if you continue to use the system after the first six months by purchasing a Primo Credit Token
- You can choose between 6-month or Upgrade (unlimited use) credit tokens
- In the unlikely event that you see no benefit, you can stop using the system and incur no further costs



The Primo system offers significant production enhancements at a very attractive price, which means very fast payback and an increase in profits against a low risk investment ...



... and with daily running costs equal to just “loose change”, choosing the Primo option is easy.

PRIMO system – get the measure of your money

Everything you need is included

Primo Radio Part Setter

Automatically sets the workpiece datum prior to cutting and takes in-process measurements of the roughed or finished dimensions of the workpiece.



Primo Radio 3D Tool Setter

Automatically sets the length and diameter of a tool. It can also perform in-process broken tool detection.



Primo Interface

Communicates between the part setter, tool setter and the machine tool controller using Renishaw's highly reliable frequency hopping spread spectrum (FHSS) radio transmission.



Primo Credit Token

Enables system operation. Each Primo kit comes with the first 6-month token included.



GoProbe software and training kit

Probing cycles for part setting and tool setting, plus everything you need to learn them easily.



Primo Premium Support Cover (PSC)*

Protects your Primo system against accidental damage during use.

* Terms and conditions apply. For more information, visit

www.renishaw.com/primotandc

Primo is available in many different kits, so you can choose the one that best suits your needs. To find out more, visit the Primo website at www.renishaw.com/primosystem

PRIMO system – as easy as 1-2-3

Designed for ease of use

Every Primo system includes the unique GoProbe software, a simple 'all-in-one' probing solution for part setting and tool setting using single-line command cycles. The self-study training kit makes it easy to use for inexperienced operators.

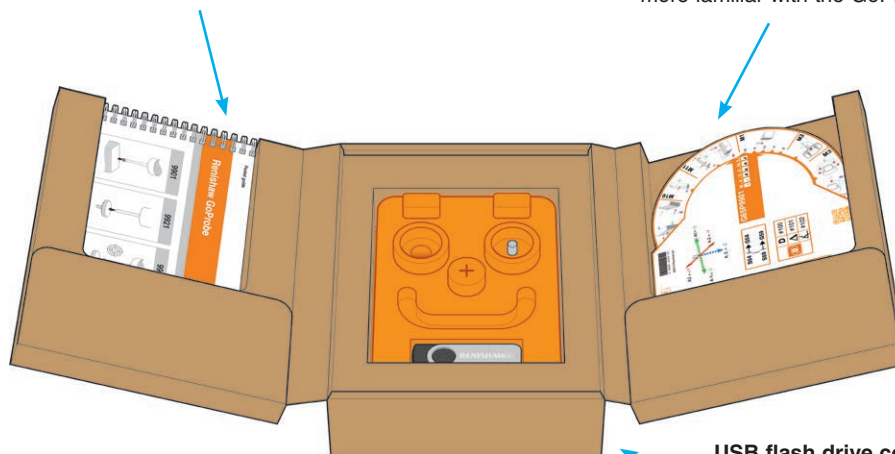


What is the GoProbe training kit?

The GoProbe training kit helps you to learn and use all of the GoProbe cycles. It includes:

GoProbe pocket guide – to guide you through the five steps of probing, perfect for initial training and everyday use.

GoProbe quick-reference tool – a simple reference tool for the single-line commands, perfect for when you are more familiar with the GoProbe cycles.



GoProbe training part – contains many features common to automated part setting. It is used in the e-learning course practical exercises.

USB flash drive containing:

- **GoProbe e-learning course** – a self-study PC-based training course featuring practical exercises to build confidence in using GoProbe cycles.
- **GoProbe programming manual** – shows you the more advanced features of GoProbe cycles.



Also available

GoProbe app – an interactive app for your smartphone. Simply select your part's features and variables to generate your single-line command.

Available for iPhone or Android™ smartphones.

PRIMO system – peace-of-mind probing

Primo Credit Token activates the Primo system

Easy payment options:

1. Six-month activation period – enables use of your Primo system as often as you want while the credit token is active.
2. Unlimited activation period – provides indefinite use of the Primo system with a one-off payment.
3. When the six-month activation period runs out, simply choose between six months or unlimited usage, and buy your token.

For more information, visit www.renishaw.com/primodownloads



Primo Premium Support Cover (PSC)*

Primo PSC is an enhanced warranty that protects your investment whenever a credit token is activated. If your Primo probe is accidentally damaged during that period, your Renishaw representative will supply a free-of-charge replacement.

Primo PSC is another Renishaw innovation that gives you peace of mind and leaves you free to concentrate on controlling your process and your costs.

* Terms and conditions apply. Registration required.

For more information, visit www.renishaw.com/primotandc

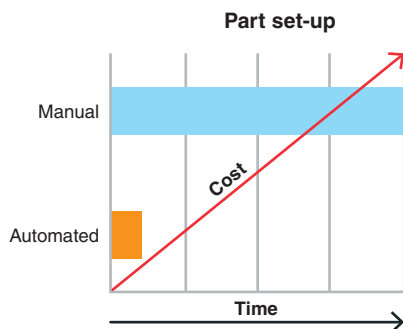


Probing pays ...

Machine tools that are optimised to cut metal more reliably and more accurately will quickly **maximise productivity, profits and your competitive edge.**



Scrap and rework reduce productivity and profits. Renishaw probes help guarantee “right first time” parts, which means **reduced waste and increased profits.**



It is widely accepted that the higher the degree of human involvement in the manufacturing process, the higher the risk of error. Automated setting using the Primo probe system can help **eliminate the risk.**

Ultimately, by improving the efficiency and performance of your machine tool processes, a Renishaw Primo probe system can help to **increase your profits.**

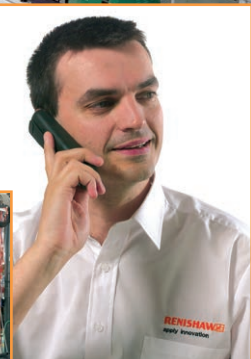
Primo system key features

- Compact design with radio transmission for small to medium machining centres
- Full system enables automated part setting and tool setting
- Kinematic design – proven and patented
- Delivers interference-free transmission via the frequency hopping spread spectrum (FHSS)
- Globally recognised 2.4 GHz waveband – compliant with radio regulations in all major markets

... the Renishaw way

Renishaw, an established world leader in metrology solutions invented the touch-trigger probe in the 1970s.

Decades of customer focus and investment in development, coupled with our own manufacturing experience enables us to provide **innovative** and **exceptional products** that are unmatched for technical excellence and performance.



Customer comment

“I firmly believe in the principle of building quality in, not inspecting to achieve it. Renishaw probing is central to that manufacturing philosophy and throughout our use of CNC machines we have had a close relationship with Renishaw – the flexibility and willingness to assist has always been outstanding.”

Castle Precision (United Kingdom)

“After installing Primo 90% of the inspection time is saved as now we can do the probing on the machine itself.”

Unimac (India)

Renishaw India [Pune]

S.No.282, Hissa No.3,
Raisoni Industrial Estate,
Village Mann, Tal:Mulshi,
Pune 411057

T +91 20 6674 6200
F +91 20 6674 6211
E india@renishaw.com
www.renishaw.co.in



About Renishaw

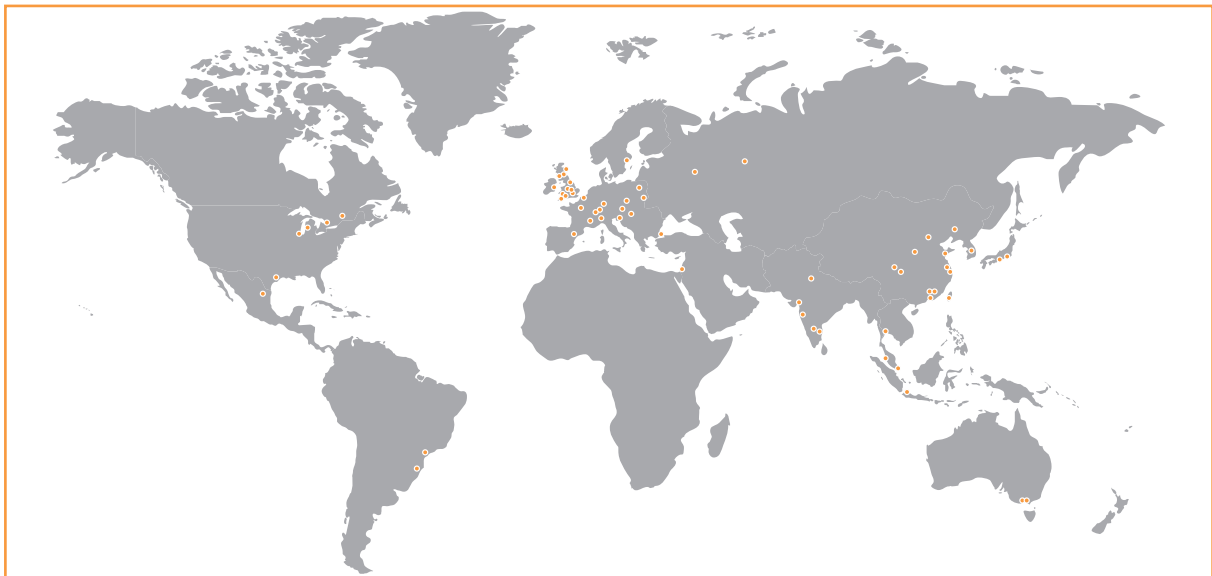
Renishaw is an established world leader in engineering technologies, with a strong history of innovation in product development and manufacturing. Since its formation in 1973, the company has supplied leading-edge products that increase process productivity, improve product quality and deliver cost-effective automation solutions.

A worldwide network of subsidiary companies and distributors provides exceptional service and support for its customers.

Products include:

- Additive manufacturing and vacuum casting technologies for design, prototyping, and production applications
- Dental CAD/CAM scanning systems and supply of dental structures
- Encoder systems for high accuracy linear, angle and rotary position feedback
- Fixturing for CMMs (co-ordinate measuring machines) and gauging systems
- Gauging systems for comparative measurement of machined parts
- High speed laser measurement and surveying systems for use in extreme environments
- Laser and ballbar systems for performance measurement and calibration of machines
- Medical devices for neurosurgical applications
- Probe systems and software for job set-up, tool setting and inspection on CNC machine tools
- Raman spectroscopy systems for non-destructive material analysis
- Sensor systems and software for measurement on CMMs
- Styli for CMM and machine tool probe applications

For worldwide contact details, visit www.renishaw.com/contact



RENISHAW HAS MADE CONSIDERABLE EFFORTS TO ENSURE THE CONTENT OF THIS DOCUMENT IS CORRECT AT THE DATE OF PUBLICATION BUT MAKES NO WARRANTIES OR REPRESENTATIONS REGARDING THE CONTENT. RENISHAW EXCLUDES LIABILITY, HOWSOEVER ARISING, FOR ANY INACCURACIES IN THIS DOCUMENT.

© 2015 Renishaw plc. All rights reserved.

Renishaw reserves the right to change specifications without notice.

RENISHAW and the probe symbol used in the RENISHAW logo are registered trade marks of Renishaw plc in the United Kingdom and other countries. apply innovation and names and designations of other Renishaw products and technologies are trade marks of Renishaw plc or its subsidiaries. All other brand names and product names used in this document are trade names, trade marks or registered trade marks of their respective owners.



H - 5470 - 8301 - 01

Issued: 0115 Part no. H-5470-8301-01-A